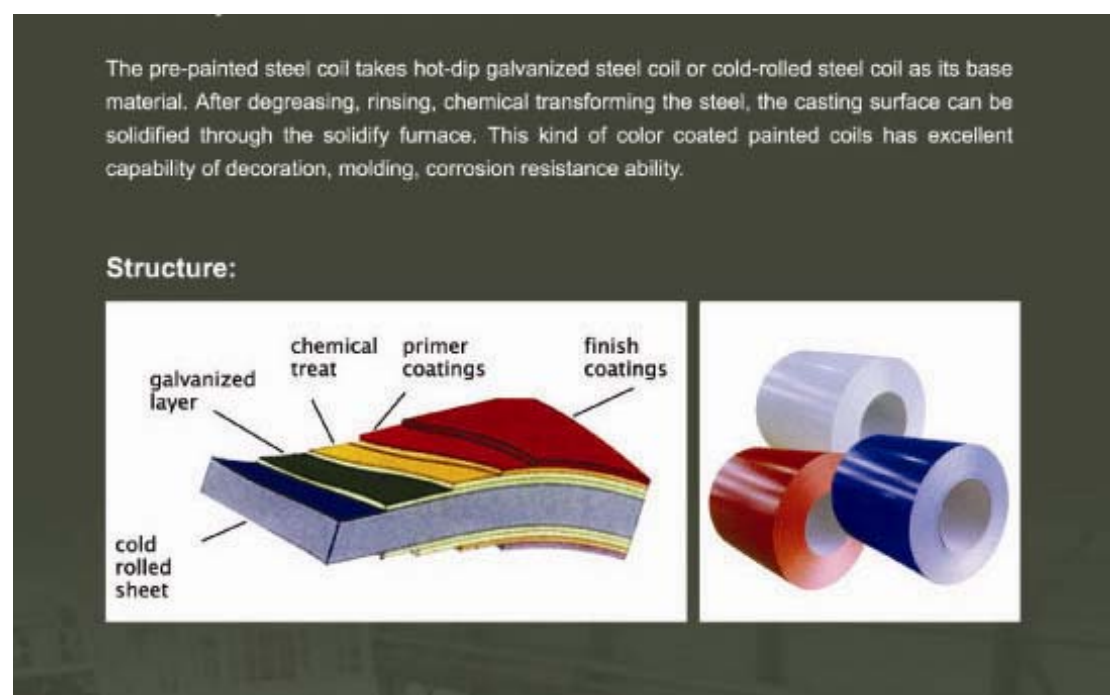


DESCRIPTION OF MATERIALS USED

SLAT OF THE SHUTTER:

The Standard is Equivalent to: EN10142, ASTM A653M CSTYPE A/B/C, and JIS 3302



Application:

Widely used in Transportation, Manufacture, Light Industry, Civil Usage, and Farming. Perfect Building Materials in Construction: T-Bar, Roofing Tiles, Fireproof Door, Home Appliance etc.

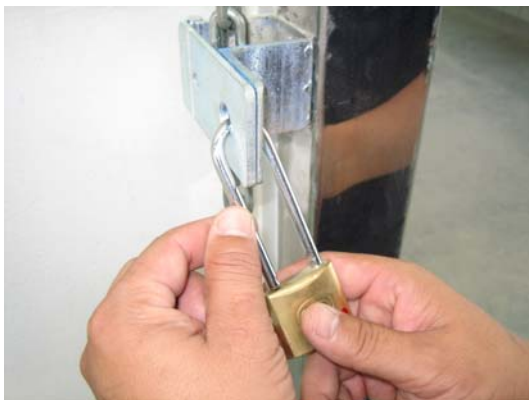
Hand-Chain Operation's Manual



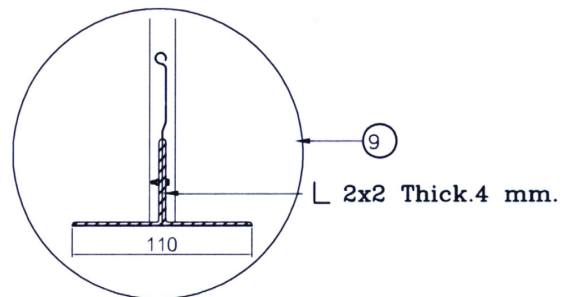
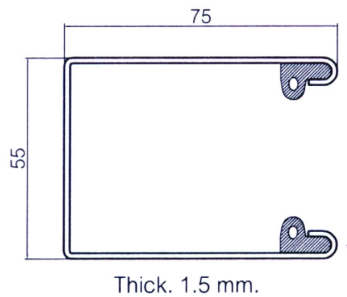
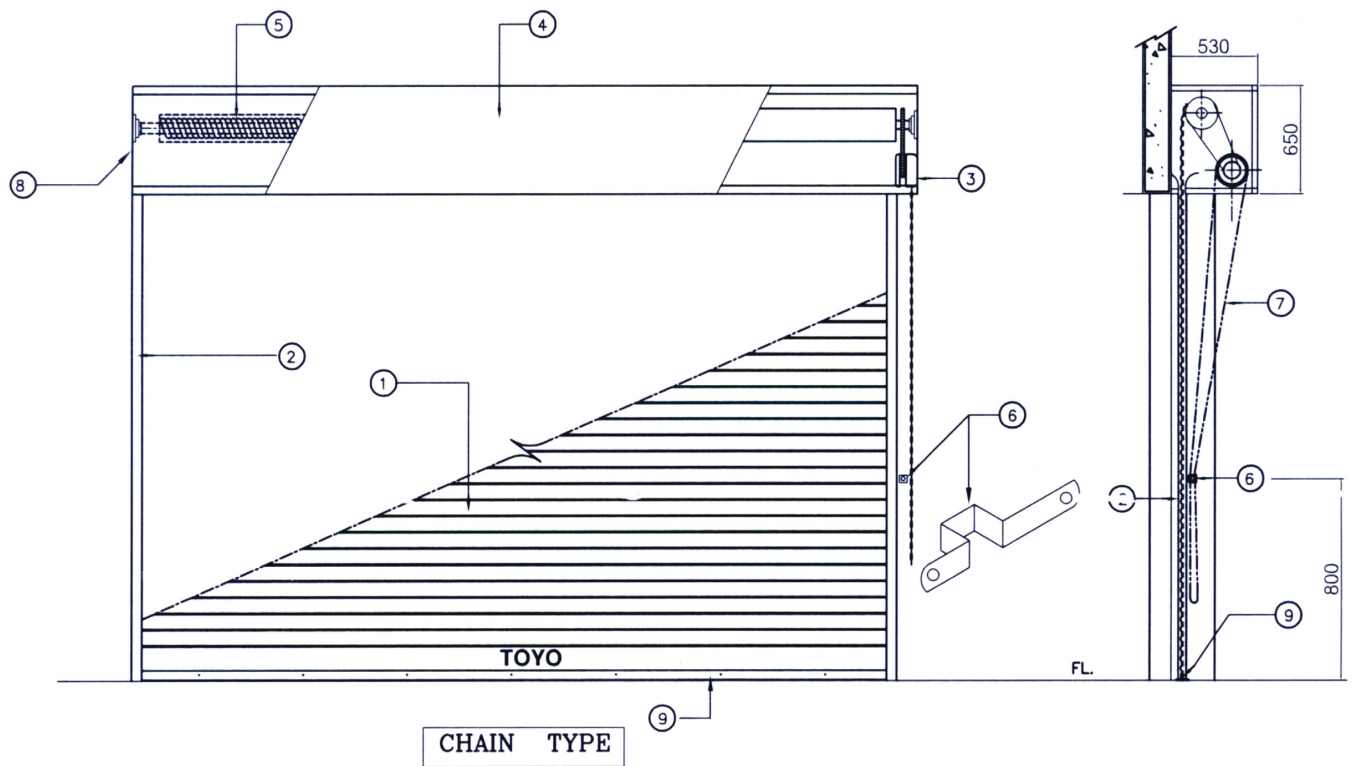
Pull the chain in order to operate for opening or closing the shutter door



Keep the chain in the hasp after using

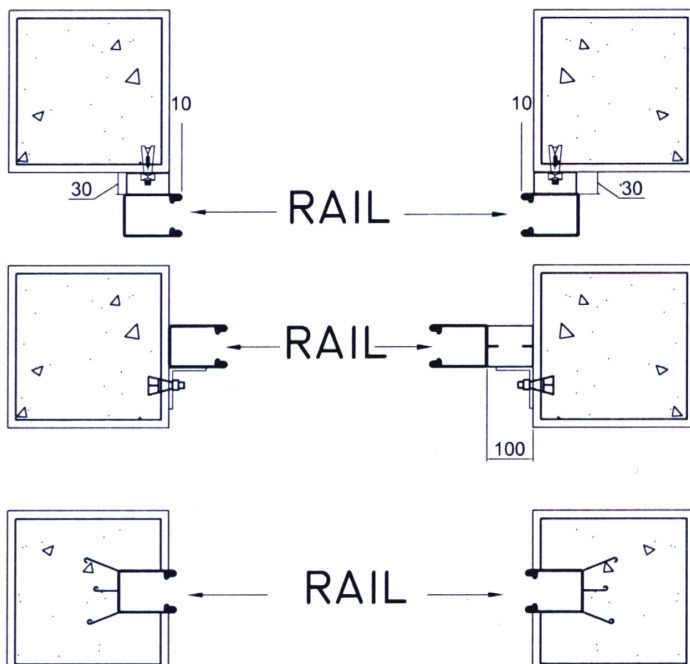


Using a pad lock for locking the chain.



ACCESSORIES :

1. CURTAIN CONSISTS OF SLATS
2. GUIDE
3. GEARING
4. SHUTTER BOX
5. COILING SHAFT
6. CHAIN LOCK
7. OPERATING CHAIN
8. F(follow) SIDE BRACKET
9. BOTTOM BAR



**THAI TOYO ROLLING CO.,LTD.
INTER SHUTTER LTD.,PART.**

PROJECT

LOCATION

DRAW TITLE



Hand Chain 1 Ton

Load between 150 kgs – 350 kgs



Hand Chain 2 Tons

Load between 350 kgs-700 kgs